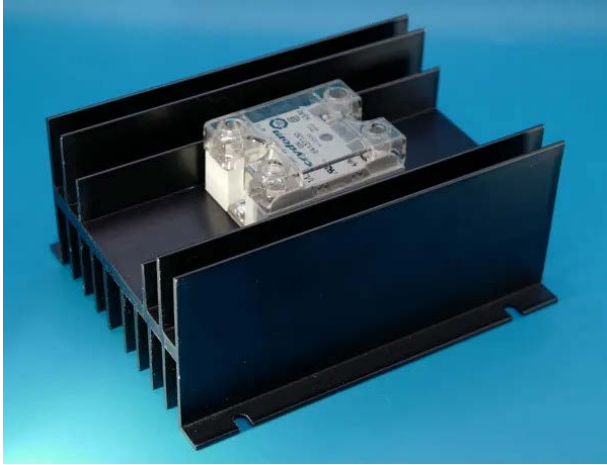


## “COOL ONE” PANEL MOUNT Solid State Relay Assembly (SSR)



50A Panel Mount SSR Assembly Dimensions: 6.0" x 4.75" x 3.0"

Anacon's "Cool One" heat sink designs provide a thermally optimized Panel mounting platform for today's high performance solid state relays. The listings below provide the actual load currents that each part type will support. If you're not sure about how to select the correct product for your application, call Anacon, toll free and discuss your application with us.

**Standard "COOL ONE" Features:**

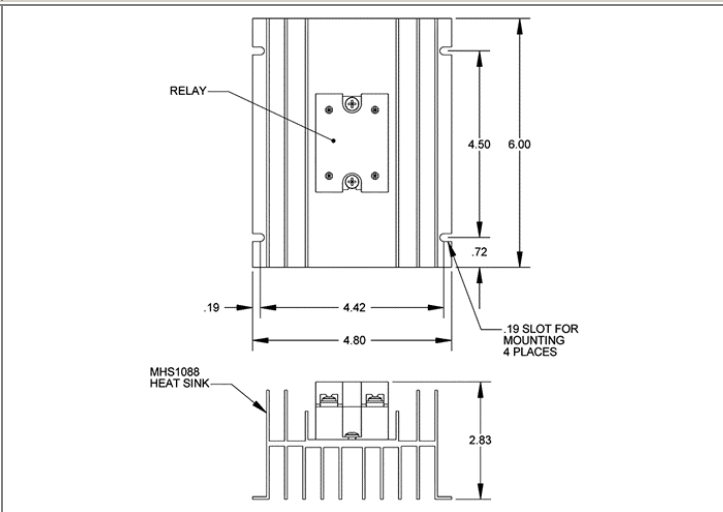
- All Anacon SSR Assemblies use relays tested to UL508A SCCR standards.
- Current Ratings from 0.1A to 50A
- Zero Cross Relays
- Output voltages from 24Vac to 660Vac
- Standard DC or AC Control Versions
- Standard LED Status Indicator
- Regulated Inputs- Back to Back SCR Design
- Standard Built in Transient Protection
- Standard Relays, UL/cUL Recognized, TUV Approved & CE Compliant Version IP20 Touch Safe
- SSR Monitor Cards Available (IP00 Version only), add suffix (-SM)
- Current Transformer Cards Available, add suffix (-CT)
- For Safety & Noise Immunity Compliance information, see page \_\_\_\_.

### SPECIFICATIONS

PART NUMBER IP00	PART NUMBER IP20	INPUT RANGE	LOAD CURRENT	LINE VOLTAGE	TRANSIENT VOLTAGE
APC4030P	APC7030P	3-32Vdc	.1A-50A @ 40 Degrees C Ambient	24-280Vac	600V Peak
APC4031P	APC7031P	90-280Vac	.1A-50A @ 40 Degrees C Ambient	24-280Vac	600V Peak
APC4032P	APC7032P	18-36Vac	.1A-50A @ 40 Degrees C Ambient	24-280Vac	600V Peak
APC4130P	APC7130P	3-32Vdc	.1A-50A @ 40 Degrees C Ambient	48-660Vac	1200V Peak
APC4131P	APC7131P	90-280Vac	.1A-50A @ 40 Degrees C Ambient	48-660Vac	1200V Peak
APC4132P	APC7132P	18-36Vac	.1A-50A @ 40 Degrees C Ambient	48-660Vac	1200V Peak

- Notes:**
- Ratings based upon 100% duty cycle for 20 minutes or 80% duty cycle continuous.
  - Ratings based upon relays being mounted either individually or side by side with zero spacing.
  - Cool One's unique construction allows better performance than conventional heat sink designs even when mounted side by side.
  - Monitor Output faults or load alarms with Anacon's SSR Monitor Cards available for all DIN mount IP00 relays. See APC MON datasheet for details, page \_\_\_\_.

#### MECHANICAL DRAWING



#### THERMAL CURVE

