



# ***ANACON POWER & CONTROLS***

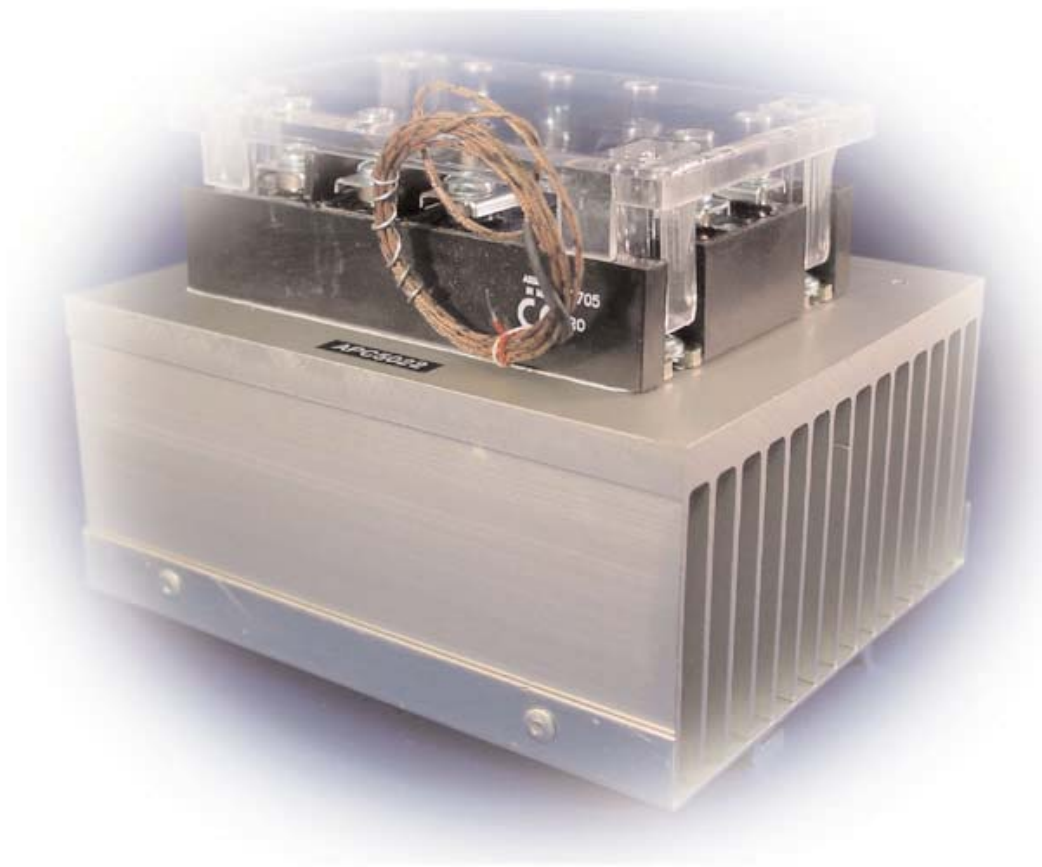
Relay Assembly Specialists

*An Anacon Electronic Sales, Inc. Company*

---

2254 Main Street, Concord, MA 01742-3829 Tel: 800-466-9080 ♦ 978-287-0715 ♦ Fax: 978-287-0952  
www.anaconpower.com ♦ sales@anaconusa.com

## **Special Assembly Products**



**PRODUCT LISTING & DATA SHEETS**

**F - Special  
Assemblies**



### DIN Mount 50A / Leg 3 Phase Solid State Relay Assembly

PART NUMBER	INPUT RANGE	LOAD CURRENT	LINE VOLTAGE	TRANSIENT VOLTAGE	RELAY TYPE	PAGE
APC5022	3-32Vdc	50A / Leg @ 40 Degrees C Ambient	48-530Vac	1200V Peak	Zero Cross	F-1

### DIN Mount DIN Mount 3 Phase Solid State Relay Assembly

PART NUMBER	INPUT RANGE	LOAD CURRENT	LINE VOLTAGE	TRANSIENT VOLTAGE	RELAY TYPE	PAGE
APC2013	3-32Vdc	.1A-30A/Leg @ 40C Ambient	48-530Vac	1200V Peak	Zero Cross	F-2
APC2013-1	90-280Vac	.1A-30A/Leg @ 40C Ambient	48-530Vac	1200V Peak	Zero Cross	F-2

### DIN Mount DC Output Solid State Relay Assembly

PART NUMBER IP00	INPUT RANGE	LOAD CURRENT	LINE VOLTAGE	SURGE CURRENT 10ms	PAGE
APCD1D07	3.5-32Vdc	.02-8A @ 40C Ambient	0-100Vdc	15A	F-3
APCD1D12	3.5-32Vdc	.02-12A @ 40C Ambient	0-100Vdc	28A	F-3
APCD1D20	3.5-32Vdc	.02-20A @ 40C Ambient	0-100Vdc	42A	F-3
APCD1D40	3.5-32Vdc	.02-28A @ 40C Ambient	0-100Vdc	106A	F-3
APCD2D07	3.5-32Vdc	.02-7A @ 40C Ambient	0-200Vdc	22A	F-3
APCD2D12	3.5-32Vdc	.02-12A @ 40C Ambient	0-200Vdc	27A	F-3
APCD4D07	3.5-32Vdc	.02-7A @ 40C Ambient	0-400Vdc	17A	F-3
APCD4D12	3.5-32Vdc	.02-10A @ 40C Ambient	0-400Vdc	36A	F-3
APCD5D07	3.5-32Vdc	.02-7A @ 40C Ambient	0-500Vdc	19A	F-3
APCD5D10	3.5-32Vdc	.02-8A @ 40C Ambient	0-500Vdc	29A	F-3

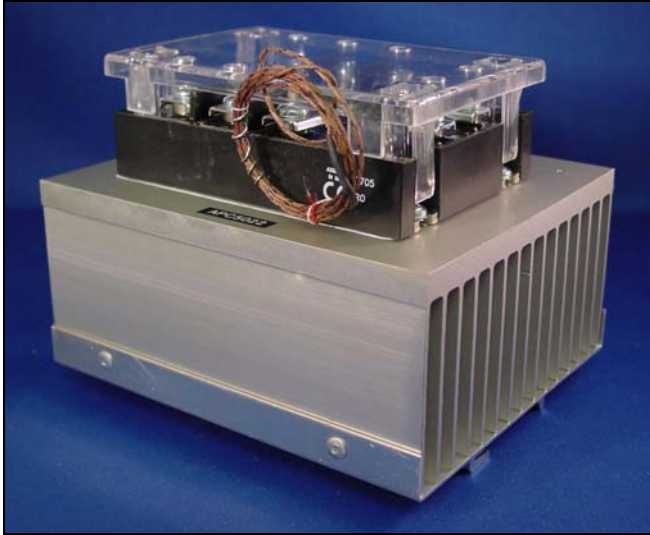
### DIN Mount Quad Output Solid State Relay Assembly

PART NUMBER	INPUT RANGE	LOAD CURRENT	LINE VOLTAGE	TRANSIENT VOLTAGE	RELAY TYPE	PAGE
APCQD24	3-32Vdc	10A / Leg @ 40 Degrees C Ambient	24-240Vac	600V Peak	Zero Cross	F-4



**"COOL ONE" DIN Mount 50A / Leg 3 Phase Solid State Relay Assembly**

Anacon's "Cool One" heat sink designs provide a thermally optimized DIN mounting platform for today's high performance solid state relays. The listings below provide the actual load currents that each part type will support. If you're not sure about how to select the correct product for your application, call Anacon, toll free and discuss your application with us. (800-466-9080)



**Standard "COOL ONE" Features:**

- Current Ratings from 0.1A to 50A/Leg
- Zero Cross Relays
- Output voltages from 48Vac to 530Vac
- Standard DC or AC Control Versions
- Standard LED Status Indicator
- Regulated Inputs - Back to Back SCR Design
- Standard Relays, UL/cUL Recognized, TUV Approved & CE Compliant Version
- 135mm DIN Relay w/Removable Touch Safe Cover Includes: Safety Cover, Relay, Heat Sink & DIN Clip
- For Safety & Noise Immunity Compliance information, see page \_\_\_\_.

**SPECIFICATIONS**

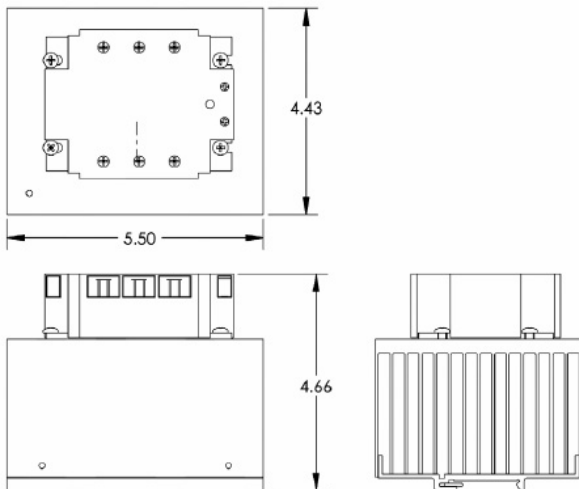
PART NUMBER	INPUT RANGE	LOAD CURRENT	LINE VOLTAGE	TRANSIENT VOLTAGE	RELAY TYPE
APC5022	3-32Vdc	50A / Leg @ 40 Degrees C Ambient	48-530Vac	1200V Peak	Zero Cross

**Notes:**

- Ratings based upon 100% duty cycle for 20 minutes or 80% duty cycle continuous.
- Ratings based upon relays being mounted either individually or side by side with zero spacing.
- Cool One's unique construction allows better performance than conventional heat sink designs even when mounted side by side.

**MECHANICAL DRAWING**

**SPECIAL NOTATION**



The APC5022 is a DIN Mount 50A/Leg, 3 Phase SSR. The heat sink is fitted with a "close on rise" thermal switch which will turn on the fan when the surface temp of the heat sink reached 60°C (110°F).

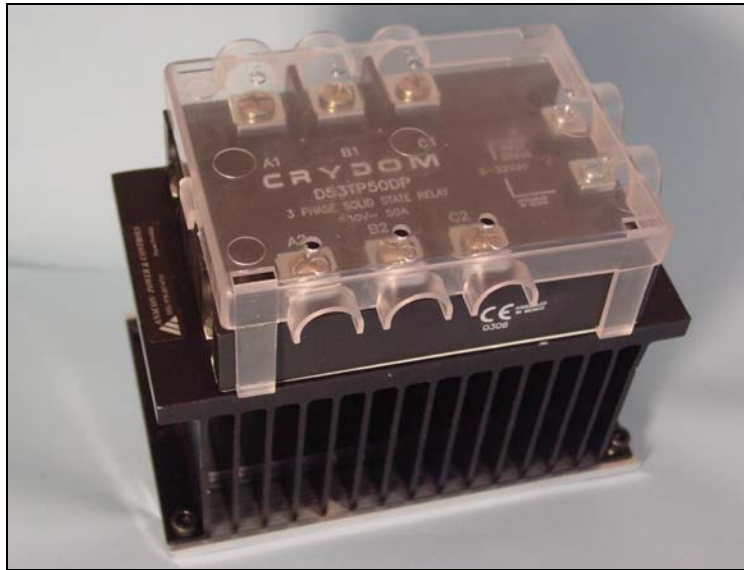
The heat sink dimensions are: 5.5" W X 5.0" H X 4.5" D.

The relay is fitted with 3 75A die and met its design limits with acceptable safety margins. If you have a custom application, Anacon Power & Controls has the right solutions. Call 1-800-466-9080 for more information.



**"COOL ONE" DIN Mount 3 Phase Solid State Relay Assembly**

Anacon's "Cool One" heat sink designs provide a thermally optimized DIN mounting platform for today's high performance solid state relays. The listings below provide the actual load currents that each part type will support. If you're not sure about how to select the correct product for your application, call Anacon, toll free and discuss your application with us. (800-466-9080)



Standard "COOL ONE" Features

- Current Ratings from 0.1A to 30A/Leg
- Zero Cross Relays
- Output voltages from 48Vac to 530Vac
- Standard DC or AC Control Versions
- Standard LED Status Indicator
- Regulated Inputs- Back to Back SCR Design
- Standard Relays, UL/cUL Recognized, TUV Approved & CE Compliant Version
- 135mm DIN Relay w/Removable Touch Safe Cover  
Includes: Safety Cover, Relay, Heat Sink & DIN Clip

Assembly Dimensions:  
5.2" x 3.0" x 4.25"

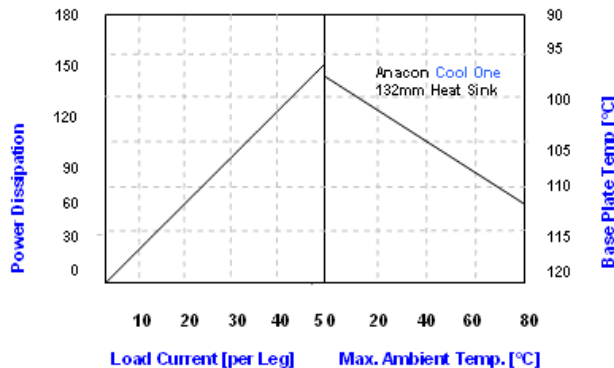
**SPECIFICATIONS**

PART NUMBER	INPUT RANGE	LOAD CURRENT	LINE VOLTAGE	TRANSIENT VOLTAGE	RELAY TYPE
APC2013	3-32Vdc	.1A-30A/Leg @ 40C Ambient	48-530Vac	1200V Peak	Zero Cross
APC2013-1	90-280Vac	.1A-30A/Leg @ 40C Ambient	48-530Vac	1200V Peak	Zero Cross

**Notes:**

- Ratings based upon 100% duty cycle for 20 minutes or 80% duty cycle continuous.
- Ratings are based upon relays being mounted either individually or side by side with zero spacing.
- Cool One's unique construction allows better performance than conventional heat sink designs even when mounted side by side.

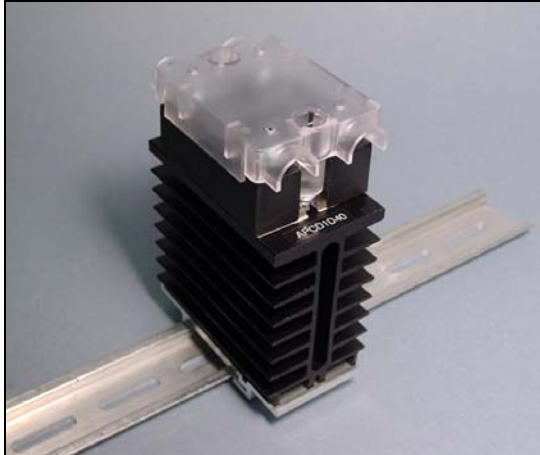
**THERMAL CURVE**





### "COOL ONE" DIN Mount DC Output Solid State Relay Assembly

Anacon's "Cool One" heat sink designs provide a thermally optimized DIN mounting platform for today's high performance solid state relays. The listings below provide the actual load currents that each part type will support. If you're not sure about how to select the correct product for your application, call Anacon, toll free and discuss your application with us. (800-466-9080)



#### Standard Cool One Features:

- Current Ratings from 0.02A to 28A
- Output voltages from 0-500VDC
- Regulated Inputs - Back to Back SCR Design
- Standard Relays, UL/cUL Recognized, TUV Approved & CE Compliant Version Touch Safe
- **NOTE: DC Inductive Loads must be diode suppressed to prevent SSR damage.**

#### SPECIFICATIONS

PART NUMBER IP00	INPUT RANGE	LOAD CURRENT	LINE VOLTAGE	SURGE CURRENT 10ms
APCD1D07	3.5-32Vdc	.02-8A @ 40C Ambient	0-100Vdc	15A
APCD1D12	3.5-32Vdc	.02-12A @ 40C Ambient	0-100Vdc	28A
APCD1D20	3.5-32Vdc	.02-20A @ 40C Ambient	0-100Vdc	42A
APCD1D40	3.5-32Vdc	.02-28A @ 40C Ambient	0-100Vdc	106A
APCD2D07	3.5-32Vdc	.02-7A @ 40C Ambient	0-200Vdc	22A
APCD2D12	3.5-32Vdc	.02-12A @ 40C Ambient	0-200Vdc	27A
APCD4D07	3.5-32Vdc	.02-7A @ 40C Ambient	0-400Vdc	17A
APCD4D12	3.5-32Vdc	.02-10A @ 40C Ambient	0-400Vdc	36A
APCD5D07	3.5-32Vdc	.02-7A @ 40C Ambient	0-500Vdc	19A
APCD5D10	3.5-32Vdc	.02-8A @ 40C Ambient	0-500Vdc	29A

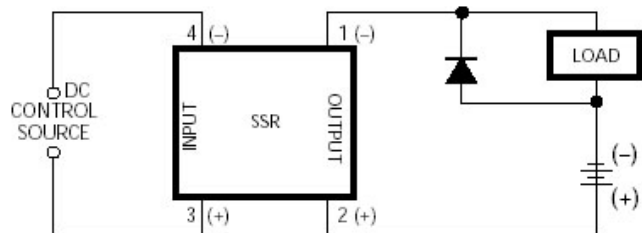
#### Notes:

- Ratings based upon 100% duty cycle for 20 minutes or 80% duty cycle continuous.
- Ratings are based upon relays being mounted either individually or side by side with zero spacing.
- Cool One's unique construction allows better performance than conventional heat sink designs even when mounted side by side.

#### TRANSIENT PROTECTION

DC inductive loads must be diode suppressed to prevent damage to Solid State Relay. Diode should be fast recovery type with PIV greater than the supply voltage.

Input and output polarity must be observed. Inductive loads must be diode suppressed.





## "COOL ONE" DIN Mount Quad Output Solid State Relay Assembly

Anacon's "Cool One" heat sink designs provide a thermally optimized DIN mounting platform for today's high performance solid state relays. The listings below provide the actual load currents that each part type will support. If you're not sure about how to select the correct product for your application, call Anacon, toll free and discuss your application with us. (800-466-9080)



### Standard **Cool One** Features:

- Current Ratings from 0.1A to 20A
- Zero Cross Relays
- Output voltages from 24Vac to 200Vac
- Standard DC or AC Control Versions
- Standard Relays, UL/cUL Recognized, TUV Approved & CE Compliant Version
- [Safety & Noise Immunity Compliance](#)
- Control LED & Random Turn On model available on Special order

### SPECIFICATIONS

PART NUMBER	INPUT RANGE	LOAD CURRENT	LINE VOLTAGE	TRANSIENT VOLTAGE	RELAY TYPE
APCQD24	3-32Vdc	10A / Leg @ 40 Degrees C Ambient	24-240Vac	600V Peak	Zero Cross

#### Notes:

- Combined output current must not exceed 40amp and 20amp rating output.
- Ratings based upon 100% duty cycle for 20 minutes or 80% duty cycle continuous.
- Ratings are based upon relays being mounted either individually or side by side with zero spacing.
- Cool One's unique construction allows better performance than conventional heat sink designs even when mounted side by side.